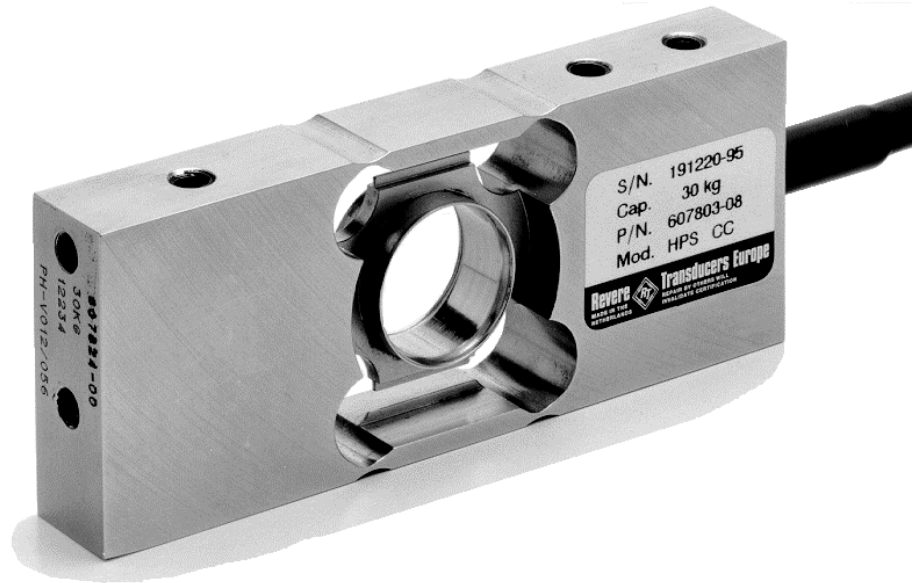


# HPS SINGLE POINT LOAD CELL



## DESCRIPTION:

The HPS is a unique fully welded all stainless steel single point (moment insensitive) load cell.

This product is suitable for low capacity platform scales, multi-head packaging machines, check weighers, loss-in-weight feeders, belt scales and general process weighing applications.

The unique construction ensures that this product can be used successfully in harsh environments found in the food, chemical and allied industries.

This product meets the stringent Weights and Measures requirements throughout Europe.

## FEATURES:

- # Fully welded, stainless steel construction
- # Hermetically sealed, IP66 and IP68
- # Certified to OIML R-60, **3000d**
- # EEx(i) versions are available for use in hazardous areas
- # Comprehensive mounting hole facility
- # Moment insensitive, platform size to 350 x 350mm
- # **CAPACITIES: 6 6 60kg**

# HPS: SPECIFICATIONS

| Standard Capacities (= E <sub>max</sub> )               | Kg                | 6, 12, 30, 60   |                        |                         |                         |
|---|-------------------|---|------------------------|-------------------------|-------------------------|
|   |                   | CC  | C1                     | C2                      | C3                      |
| Accuracy Class According to OIML R-60                   |                   | CC  | C1                     | C2                      | C3                      |
| Max. Number of Verification Intervals (n <sub>v</sub> ) |                   |   | 1000                   | 2000                    | 3000                    |
| Minimum Verification Interval (v <sub>min</sub> )       |                   |   | E <sub>max</sub> /5000 | E <sub>max</sub> /10000 | E <sub>max</sub> /12000 |
| Minimum Utilisation                                     | %                 |   | 20                     | 20                      | 20                      |
| Accuracy According to Type Designation                  |                   | CC  | C1                     | C2                      | C3                      |
| Combined Error  | %S                | #" 0.0500   | #" 0.0300              | #" 0.0230               | #" 0.0200               |
| Non-Repeatability                                       | %S                | #" 0.0200   | #" 0.0200              | #" 0.0100               | #" 0.0100               |
| Minimum Dead Load Output Return <sup>1</sup>            | %S                | #" 0.0500   | #" 0.0500              | #" 0.0250               | #" 0.0167               |
| Creep Error (30 Minutes) <sup>1</sup>                   | %S                | #" 0.0600   | #" 0.0490              | #" 0.0245               | #" 0.0245               |
| Creep Error (20-30 Minutes) <sup>1</sup>                | %S                | #" 0.0200   | #" 0.0105              | #" 0.0053               | #" 0.0053               |
| Temp. Effect on Min. Dead Load Output                   | %S/5EC            | #" 0.0250   | #" 0.0140              | #" 0.0070               | #" 0.0058               |
| Temp. Effect on Sensitivity                             | %S/5EC            | #" 0.0250   | #" 0.0080              | #" 0.0055               | #" 0.0045               |
| Minimum Dead Load                                       | %E <sub>max</sub> | 0   |                        |                         |                         |
| Maximum Safe Overload                                   | %E <sub>max</sub> | 150   |                        |                         |                         |
| Ultimate Overload                                       | %E <sub>max</sub> | 300   |                        |                         |                         |
| Maximum Safe Sideload                                   | %E <sub>max</sub> | 100   |                        |                         |                         |
| Deflection at E <sub>max</sub>                          | mm                | 0.24 ± 0.02 / 0.19 ± 0.01 / 0.15 ± 0.01 / 0.22 ± 0.03 |                        |                         |                         |
| Excitation Voltage                                      | V                 | 5...12  |                        |                         |                         |
| Maximum Excitation Voltage                              | V                 | 15  |                        |                         |                         |
| Rated Output (= S)                                      | mV/V              | 2   |                        |                         |                         |
| Tolerance on Rated Output                               | mV/V              | " 0.2   |                        |                         |                         |
| Zero Balance  | %S                | #" 1.0  |                        |                         |                         |
| Input Resistance  | Ω                 | 400 " 6   | 410 " 6                |                         |                         |
| Output Resistance                                       | Ω                 | 350 " 7   |                        |                         |                         |
| Insulation Resistance                                   | MΩ                | \$ 5000   |                        |                         |                         |
| Compensated Temperature Range                           | EC                | -10... + 40   |                        |                         |                         |
| Operating Temperature Range                             | EC                | -40... + 80   |                        |                         |                         |
| Storage Temperature Range                               | EC                | -40... + 90   |                        |                         |                         |
| Element Material (DIN)                                  |                   | Stainless Steel 1.4542                                |                        |                         |                         |
| Sealing (DIN 40.050)                                    |                   | IP66 and IP68   |                        |                         |                         |
| Eccentric load effect <sup>2</sup>                      | %S                | 0.03(version 1)/ 0.3(version 2)                       |                        |                         |                         |
| Recommended Torque on Fixation Bolts                    | Nm                | 6   |                        |                         |                         |
| EEx(i) Certification                                    |                   | EEx ib IIC T6 / EEx ib IIC T4                         |                        |                         |                         |

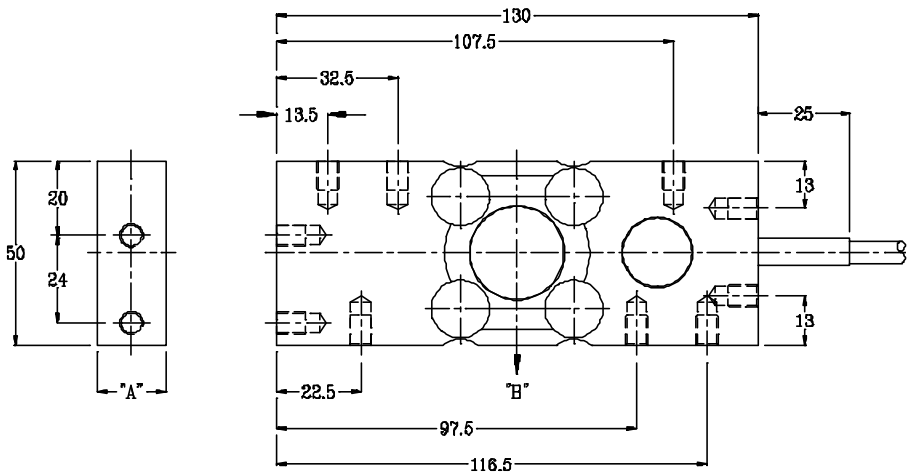
1 Applies for the temperature range -10 to + 40 EC  
 2 Applies at 50% x Rated Load at 150mm radius.

Accuracy classes C1, C2 and C3 are in agreement with the OIML recommendation R-60.  
 Correct mounting of the load cells is essential to ensure optimum performance.  
 Sufficient protection should be given to the load cell to prevent overload from occurring. Protection during transportation of the equipment to which the load cell is fitted, must be considered.  
 Cable length 7m. Cable screen is not connected to load cell body. Further information is available on request.

**REVERE TRANSDUCERS EUROPE B.V.**  
 Ramshoorn 7  
 Postbus 6909, 4802 HX Breda  
 The Netherlands  
 Tel: (+ 31) 76-5480700  
 Fax: (+ 31) 76-5412854

**REVERE TRANSDUCERS INC.**  
 14192 Franklin Ave  
 Tustin, CA 92780-7016  
 U.S.A.  
 Tel: 714.731.1234  
 Fax: 714.731.2019

**REGIONAL OFFICE UK**  
 The Business Centre  
 Edward Street, Redditch  
 Worcs B97 6HR, UK  
 Tel: (+ 44) 1527 -65888  
 Fax: (+ 44) 1527- 64888



**Attention:**  
 Dimensions: mm.  
 All dimension tolerances according to DIN 7168; middle accuracy.

**Wiring**  
 Excitation + Green  
 Excitation - Black  
 Output + White  
 Output - Red  
 Sense + Yellow  
 Sense - Blue  
 Shield Orange

| Capacity                             | 6, 12, 30         | 60   |
|--------------------------------------|-------------------|------|
| A                                    | 18.5              | 23.5 |
| B                                    | Central Load Axis |      |
| Max. recommended platform size 350mm |                   |      |
| All Threads M6x1 (8 Deep)            |                   |      |

All specifications subject to change without notice