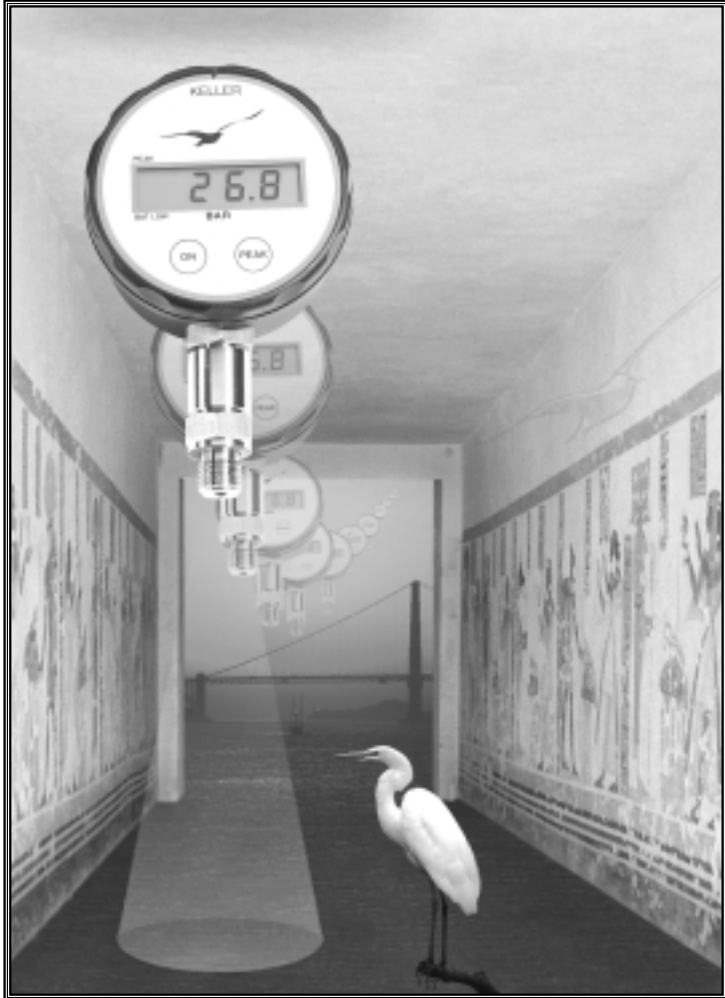


P I C C O L O

DIGITAL PRESSURE INDICATOR WITH PEAK MEASUREMENT



KELLER AG für Druckmesstechnik

St. Gallerstrasse 119 • CH-8404 Winterthur
Tel. +41(0)52-235 25 25 • Fax +41(0)52-235 25 00

KELLER Gesellschaft für Druckmesstechnik mbH

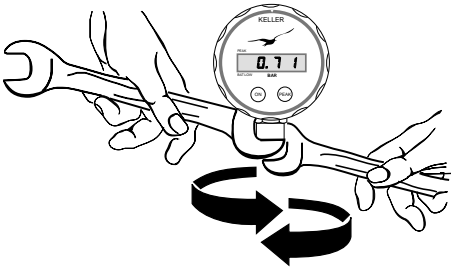
Schwarzwaldstrasse 17 • D-79798 Jestetten
Tel. +49(0)7745 9214-0 • Fax +49(0)7745 9214-50

<http://www.keller-druck.com>

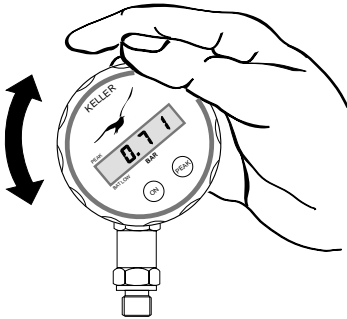
INSTALLATION

Mounting:

Screw the G1/4 male port of the PICCOLO into the female pressure port and tighten using the lower hexagon of the transducer. Loosen the upper hexagon and rotate the PICCOLO to the desired position. Retighten.



The face of PICCOLO can be rotated through 355°. This feature allows the PICCOLO to be mounted in all possible positions; vertical, horizontal or upside down.



The splash-proof cover of the PICCOLO is sealed with an O-ring and may easily be removed by hand by turning the display ring beyond the limit stop.

STANDARD OPERATION

The PICCOLO is operated with two front keys "ON" and "PEAK".

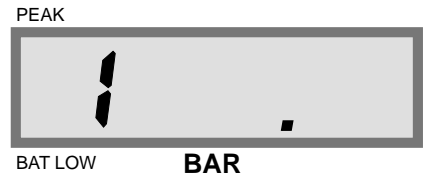
- Depressing "ON" sets the instrument into operation. Pressing "ON" again will turn the instrument off.

After turning on the instrument, the display indicates the pressure in bar:



In order to save power, the instrument will automatically turn off after 10 minutes.

When the pressure range is exceeded, the display will blank the last three digits. Only the "1" remains.



Do not increase pressure further!
Release pressure or damage may occur!

Excessive overload can lead to sensor destruction. The display will start to jump around or will freeze by indicating "1" or "0". Send in the instrument for repair!

PEAK-MODE

With the instrument turned on, pressing the "PEAK"-key will lead into the peak measurement mode.

The PEAK-segment appears on the display:



Now the maximum pressure values are indicated. Slow and fast pressure peaks can be measured and displayed.

Pressing the "PEAK"-key again returns the PIC-COLO to standard operation.

A new peak measurement can be initiated by pressing the "PEAK"-key again.

Explanation of the peak circuit (see drawing):

The peak circuit is a fast analogue capacitor/diode storage circuit which also freezes the digital display. Therefore the peak capture time (2 milliseconds) is much faster than the digital display conversion rate of 3 readings per second. The peak reading does not decay as the capacitor discharges.

The frozen display is held until the next fast peak (greater than the analogue stored value) occurs.

Note:

Due to internal signal noise the peak reading at Zero pressure will be around 20 digits.

