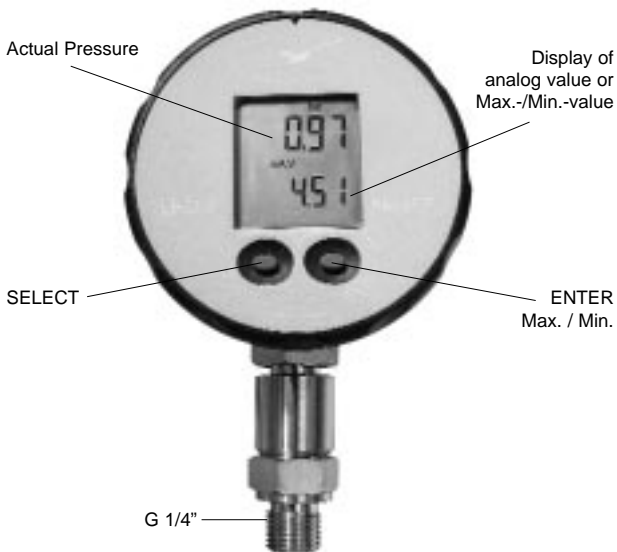


LEO 3

**Intelligent Transmitter with
Digital Indication**



LEO 3 has two operating keys. The left key (SELECT) serves to select the functions and the pressure units. The right key (ENTER) activates the selected function or pressure unit. The right key is also used to switch between the analog-, the MAX.- and the MIN.-value.

Turn-On: After the segmenttest, the instrument subsequently displays the software version (year/week) and the calibrated pressure range. Then, the instrument is in the measuring-Mode. It shows the actual pressure (top display) and the current of the analog output (bottom display).

The instrument has the following functions:

RESET: Max.- and Min.-value are set to the actual pressure.

MANO: Releases the following functions:

ZERO SET: The zero is set to the applied pressure.

ZERO RES: Restores the instrument back to factory settings.

Followed by the unit selection:

bar, mbar/hPa, kPa, MPa, PSI, kp/cm²

OUTP SETT: Opens the menu for the configuration of the analog-output.

CODE: If the right code is set (22), the following functions will be released:

ZERO: Sets the analog output at actual pressure to 4,0 mA.

FS: Sets the analog output at actual pressure to 20,0 mA.

FACT SETT: Sets the analog output back to factory settings.

Example: Setting a new Zero Reference

- > Turn on the instrument by shortly pressing the SELECT-key.
- > Wait for the instrument's measuring mode (approx. 3 seconds).
- > Press the SELECT-key 2 times: **MANO** appears.
- > Press ENTER: **ZERO SET** appears.
- > Press ENTER: The new Zero reference is set. The instrument returns to the measuring mode.

Display of the Maximum- or Minimum Pressure

When in the measuring mode (Display: Actual Pressure and current of the analog output), you may display the Max.- and Min.-value for 5 seconds by shortly pressing the ENTER-key.

Notes

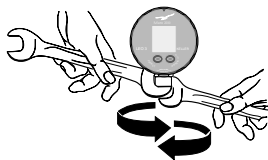
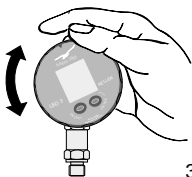
- 1) The functions and units can also be called up by keeping the SELECT-key depressed. Releasing the key enables the displayed function or unit to be activated with the ENTER-key.
- 2) If the selected function or unit is not activated within 5 seconds with the ENTER-key, LEO 3 returns to the measuring mode without changing any settings. Exception: Functions for the analog output.
- 3) Turning LEO 3 on and off does not influence any of the previous settings (unit, Zero, analog output).
- 4) If a pressure can not be represented on the display or the analog output goes beyond the lowest (3,8 mA) or highest (20,4 mA) limit, **UFL** (underflow) or **OFL** (overflow) appears on the display.
- 5) If the actual pressure goes beyond the measuring range, the last valid pressure value starts flashing on the display.
- 6) If **ERR** appears on the upper display, it's an indication that the instrument is malfunctioning. The instrument must be repaired.
- 7) Optionally available is the software READ30/PROG30 and an adapter cable for the connection of LEO 3 to a PC via the RS485 interface. This allows the programming of the measuring range for the analog output without applying any pressure and also enables the read-out of the actual pressure.

Installation

Screw the G1/4 male port of LEO 3 into the female pressure port and tighten using the lower hexagon of the transducer.

Loosen the upper hexagon and rotate the LEO 3 to the desired position.

Retighten.



The face of LEO 3 can be rotated through 355°. This feature allows the LEO 3 to be mounted in all possible positions; vertical, horizontal or upside down.

Ranges / Calibration

The factory setting of the Zero for the ranges 0...4 bar abs. or 0...30 bar abs. is at 0 bar absolute. For sealed gauge pressure measurements, activate "ZERO SET" at ambient pressure.

Instruments with the ranges 0...300 bar or 0...1000 bar are calibrated in a sealed gauge mode with 1 bar absolute pressure as a Zero reference.

Plug Assignment Binder 723

Pin 1: OUT / GND

Pin 4: RS485A

Pin 2: not connected

Pin 5: RS485B

Pin 3: +Vcc